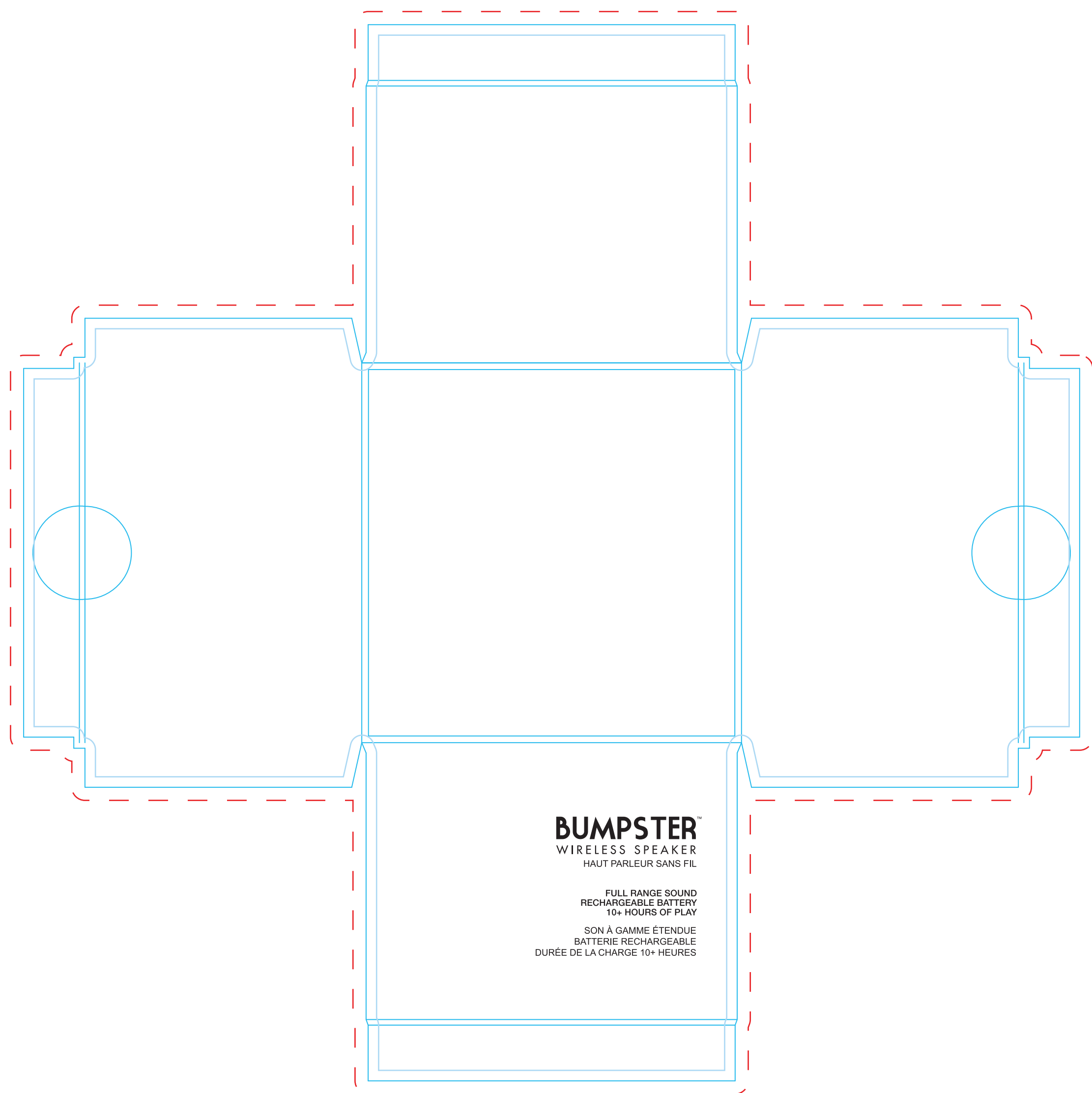


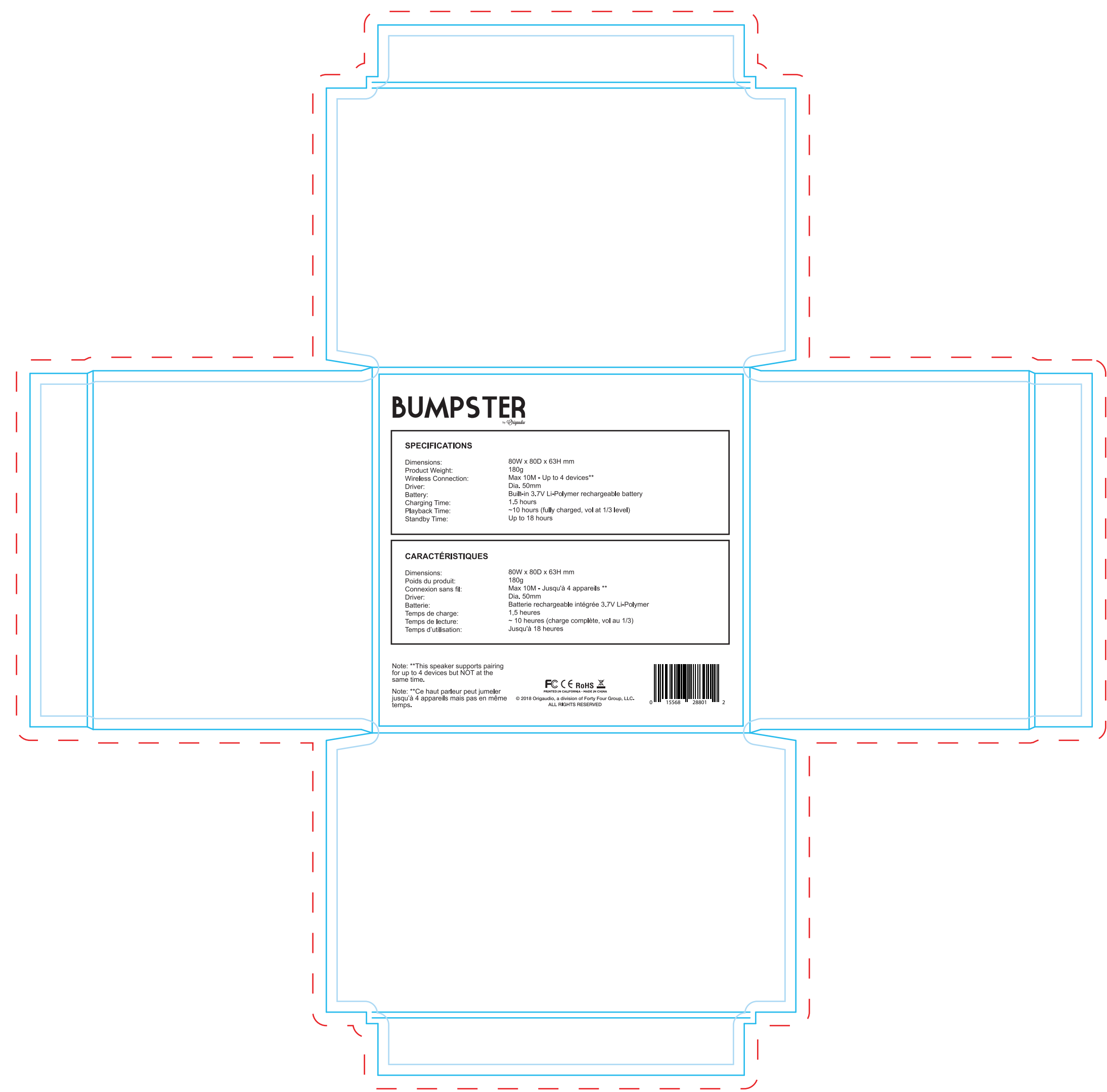
APPLICABLE FOR ITEM: **OR2302**

BUMPSTER™ WIRELESS SPEAKER

LID



BASE



- * dotted area indicates minimal bleed required (0.125")
- * blue outline indicates actual size of box
- * light blue outline indicates safe area

Please note that certain elements **MUST** be included on the packaging and cannot be removed, for the sake of legality and compliance:

- Technical specs (for speakers, headphones and chargers)
- Certification logos (FCC, CE, trashcan, RoHS)
- "Made in China"

** The barcodes and copyright info are not mandatory and can be removed if the client so chooses.